

According to the Anne E. Casey Foundation, of 50 major U.S. cities surveyed, Pittsburgh, PA ranked the worst in maternal smoking. At St. Andrew, we didn't just ask why. We enlisted the greatest minds.

And then, **We did something about it.**<sup>SM</sup>



## WELLNESS SUITE<sup>®</sup>

A Multilingual, Interactive Community of Modular Health Education Touchscreen Kiosk and Web Programs Making People's Lives Better.

presented by  
**ST. ANDREW DEVELOPMENT, INC.**  
[www.StAndrew.com](http://www.StAndrew.com)

### PROGRAM ID & DESCRIPTION

## **BABIES BREATH<sup>®</sup>**

A modular interactive health education touchscreen kiosk and web based program directing pregnant women toward a tobacco free pregnancy.

### PROGRAM MISSION

**Influence pregnant women and their support network to refrain from smoking during and beyond their pregnancy by emphasizing the positive health outcomes that will occur to their baby and themselves.**

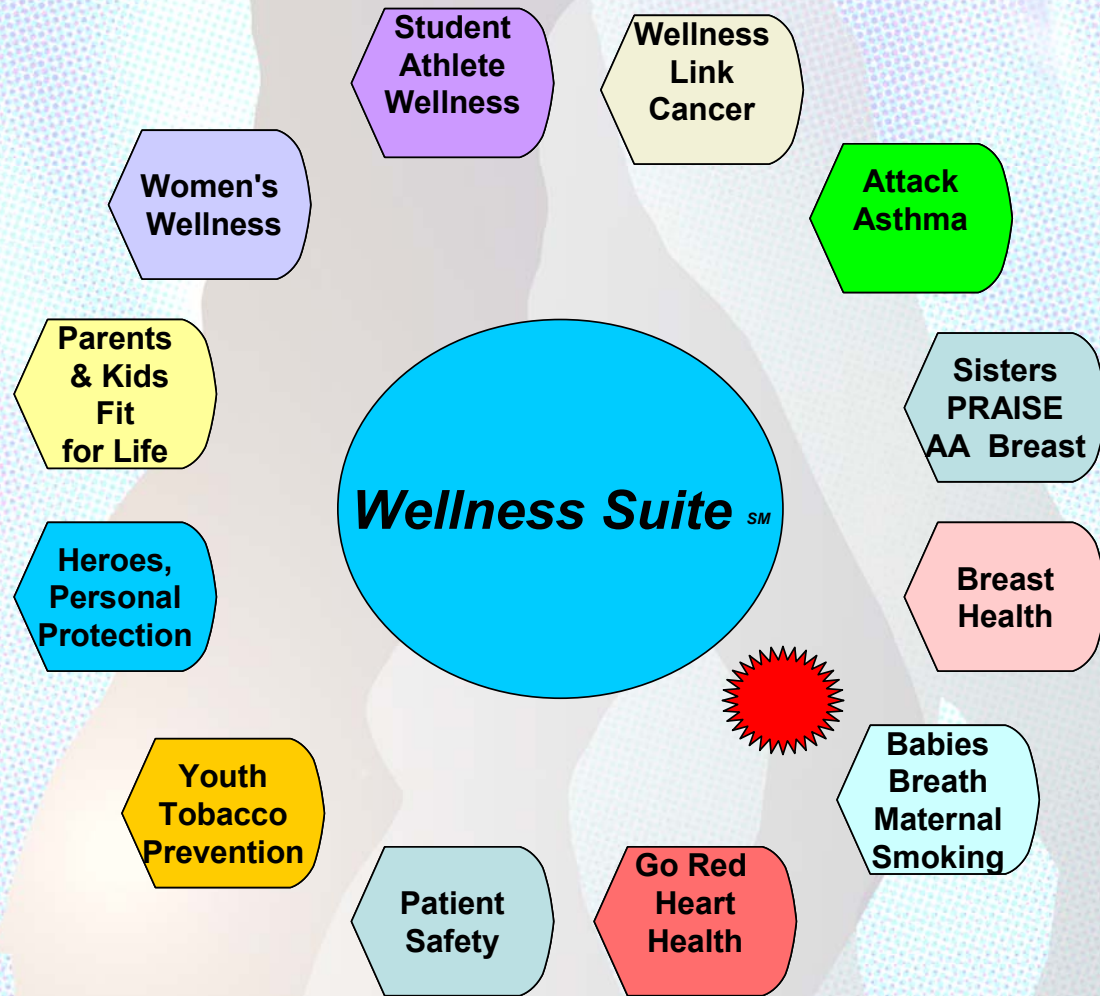
### PROGRAM BENEFITS

- **Powerful** – Engages pregnant women in a confidential, direct one on one setting using personalized health education touchscreen kiosks and the Web. Connects users to local resources.
- **Simple** – Economically presents complex information on pregnancy and tobacco use using positive behavioral reinforcement in an easy to understand format using highly engaging images, graphics and audio narrations. Ideal for WIC centers.
- **Captivating** - Provides users the ability to “see my baby now” and see the benefits of not smoking during and beyond their pregnancy.
- **Effective** – Independently developed assessment tools show that the program is extensively used and also influences users to favorably alter their behavior.
- **Outcome Based** - Offers program administrators the ability to retrieve full usage statistics detailing topics viewed (frequency), self-assessment tools (optional) and personal information (optional) directly from the web meeting HIPAA standards.

**Wellness Suite** offers a variety of modular health education program components to our clients supporting flexible deployment strategies by using reliable, self-standing, easy to use touchscreen kiosks and web portals. For more information on how the **Wellness Suite** family of programs can help your organization reach into your community and influence health outcomes, contact St. Andrew Development today on the web at [www.StAndrew.com](http://www.StAndrew.com), email at [Wellness@StAndrew.com](mailto:Wellness@StAndrew.com), or call 717-848-5818.



# Wellness Suite <sup>SM</sup> Community of Health Education Touchscreen Kiosk & Web Programs



## Kiosk

**Main Entry:** ki-*osk*

**Pronunciation:** \kē-'äsk\

**Function:** *noun*

**Etymology:** Turkish *köşk*, from Persian *kūshk* portico

**Date:** 1625

1 : an open summerhouse or pavilion

2 : a small structure with one or more open sides that is used to vend merchandise (as newspapers) or services (as film developing)

3 : a small stand-alone device providing information and services on a computer screen

At St. Andrew Development our kiosks are living & breathing, learning intervention tools helping make people's lives healthier, safer and better.

To learn more contact us today at

- On the web - [www.StAndrew.com](http://www.StAndrew.com)
- Email - [Wellness@StAndrew.com](mailto:Wellness@StAndrew.com)
- Call (717) 848-5818